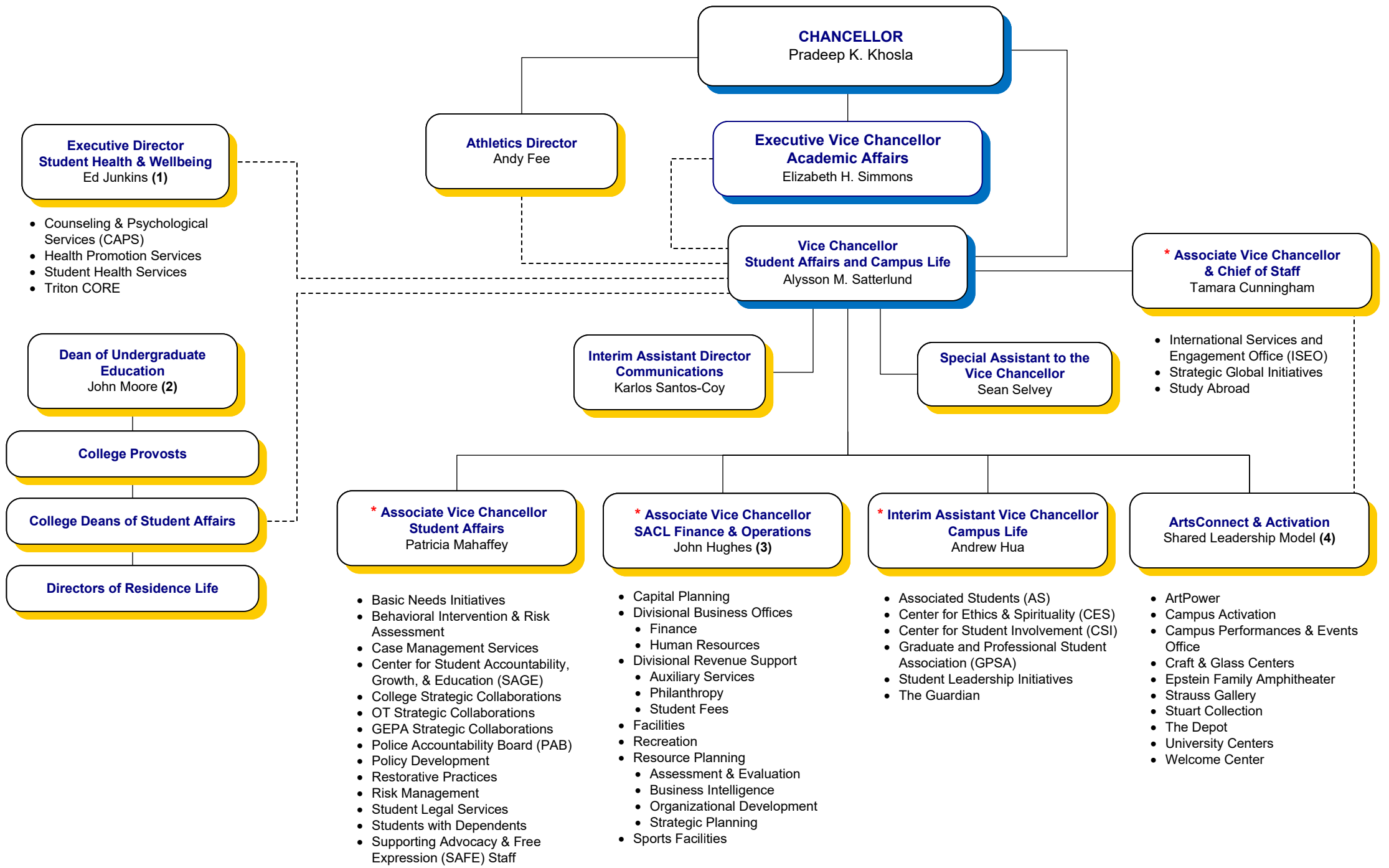


VICE CHANCELLOR - STUDENT AFFAIRS AND CAMPUS LIFE ORGANIZATION CHART



**Executive Director
Student Health & Wellbeing**
Ed Junkins (1)

- Counseling & Psychological Services (CAPS)
- Health Promotion Services
- Student Health Services
- Triton CORE

**Dean of Undergraduate
Education**
John Moore (2)

College Provosts

College Deans of Student Affairs

Directors of Residence Life

Athletics Director
Andy Fee

**Executive Vice Chancellor
Academic Affairs**
Elizabeth H. Simmons

**Vice Chancellor
Student Affairs and Campus Life**
Alysson M. Satterlund

*** Associate Vice Chancellor
& Chief of Staff**
Tamara Cunningham

- International Services and Engagement Office (ISEO)
- Strategic Global Initiatives
- Study Abroad

**Interim Assistant Director
Communications**
Karlos Santos-Coy

**Special Assistant to the
Vice Chancellor**
Sean Selvey

*** Associate Vice Chancellor
Student Affairs**
Patricia Mahaffey

- Basic Needs Initiatives
- Behavioral Intervention & Risk Assessment
- Case Management Services
- Center for Student Accountability, Growth, & Education (SAGE)
- College Strategic Collaborations
- OT Strategic Collaborations
- GEPA Strategic Collaborations
- Police Accountability Board (PAB)
- Policy Development
- Restorative Practices
- Risk Management
- Student Legal Services
- Students with Dependents
- Supporting Advocacy & Free Expression (SAFE) Staff

*** Associate Vice Chancellor
SACL Finance & Operations**
John Hughes (3)

- Capital Planning
- Divisional Business Offices
 - Finance
 - Human Resources
- Divisional Revenue Support
 - Auxiliary Services
 - Philanthropy
 - Student Fees
- Facilities
- Recreation
- Resource Planning
 - Assessment & Evaluation
 - Business Intelligence
 - Organizational Development
 - Strategic Planning
- Sports Facilities

*** Interim Assistant Vice Chancellor
Campus Life**
Andrew Hua

- Associated Students (AS)
- Center for Ethics & Spirituality (CES)
- Center for Student Involvement (CSI)
- Graduate and Professional Student Association (GPSA)
- Student Leadership Initiatives
- The Guardian

**ArtsConnect & Activation
Shared Leadership Model (4)**

- ArtPower
- Campus Activation
- Campus Performances & Events Office
- Craft & Glass Centers
- Epstein Family Amphitheater
- Strauss Gallery
- Stuart Collection
- The Depot
- University Centers
- Welcome Center

* Acts for the Vice Chancellor in her absence
 (1) Reports to UC San Diego Health CEO
 (2) Reports to Executive Vice Chancellor
 (3) Has a dotted line to Vice Chancellor for Finance & Administration
 (4) Shared leadership provided by:
 Cristina Della Coletta, Dean for A&H
 Hemlata Jhaveri, SAVC for RRSS
 Tamara Cunningham, AVC for GI & CoS